



# Ryder-Cheshire News

NEWSLETTER OF THE AUSTRALIAN ASSOCIATION OF RYDER-CHESHIRE FOUNDATIONS

*"For the Relief of Suffering"*

FOUNDERS:- Group Captain Lord Cheshire, VC, OM, DSO, DFC: Lady Ryder of Warsaw, CMG, OBE.

NATIONAL PATRON:- His Excellency Major-General Michael Jeffery, AC CVO MC (Retd)

Governor General of the Commonwealth of Australia

Issue Number 62 March 2005

## RYDER-CHESHIRE FOUNDATIONS IN AUSTRALIA

### Australian Capital Territory

President Shirley Williams,  
Telephone 02 6296 1831  
E-Mail: soulhealer\_sw@yahoo.com.au

### Ballarat Support Group

President Bernard Bradbury  
Telephone 03 5330 1556  
E-Mail bradv@netconnect.com.au

### Bendigo Support Group

President Hugh Elphinstone  
Telephone 03 5443 1163  
E-Mail hugh\_elphinstone@hotmail.com

### Mt Gambier Support Group

Secretary Di McEwen  
Telephone 08 8725 2453  
E-Mail diane.mce@internode.on.net

### New South Wales

President Jayne Robinson  
Telephone 02 9489 5589  
E-Mail jaynearobinson@hotmail.com.au

### South Australia

Secretary Margaret Blaber  
Telephone 08 8363 4584  
E-Mail mblaber@ozemail.com.au

### Victoria

President Peter Newton  
Telephone 03 9894 3191  
E-Mail peter.newton@ryder-cheshire.org

### Western Australia

Hon Secretary Evelyn Petters  
Tel 08 9349 5043.  
E-Mail petters@iinet.net.au

## RYDER-CHESHIRE HOMES IN AUSTRALIA

### Ivanhoe Ryder-Cheshire Home

12-14 Donaldson Street, Ivanhoe, VIC 3079  
Telephone (Ivanhoe Home) 03 9254 2400  
Secretary Jill Moor  
Telephone 03 9853 7442  
E-Mail pics@bigpond.com

### Perth Ryder-Cheshire Home

Barbara Seabrook House  
6 Selby Street, Shenton Park, WA 6008  
Telephone (B S House) 08 9388 3467  
RCF Secretary, Evelyn Petters 08 9349 5043

## RYDER-CHESHIRE HOMES OVERSEAS

### East Timor Klibur Domin Tibar

The Ryder-Cheshire Foundation  
Klibur Domin Tibar, PO Box 453, Dili  
East Timor via Darwin  
Home Manager Joaquim Soares  
Telephone 0011 670 7233 488  
E-Mail kd@east-timor.net

### India Raphael International Centre

Director Brigadier AAS Sinha  
PO Box 157, Dehradun,  
Uttranchal, India 248001

## IN THIS ISSUE .....

News from RAPHAEL Page 2

News from TIMOR-LESTE Page 3

TSUNAMI DISASTER Page 4

VALE Kath Solomon Page 4

### STATE REPORTS

AUSTRALIAN CAPITAL TERRITORY Page 5

SOUTH AUSTRALIA Page 5

NEW SOUTH WALES Page 6

BALLARAT SUPPORT GROUP Page 6

WESTERN AUSTRALIA Page 7

VICTORIA Page 8

## WOULD YOU LIKE TO VOLUNTEER OVERSEAS?

There are Volunteer Opportunities  
at the Ryder-Cheshire Homes  
at Klibur Domin in East Timor  
and Raphael in Dehradun, India,

Working in one of these homes as a volunteer for a few months is a great way to **expand your horizons** and at the same time **make a contribution to the welfare of some of the most disadvantaged people in the world.**

Depending on the location, Australian volunteers support the work of local staff, assist with training, and sometimes contribute to developmental projects. Special skills are welcome but not essential.

**For more information contact your State Foundation  
or Gai Smith, Volunteers Co-ordinator,  
Telephone 02 9698 1618  
41 Wells Street, Redfern, NSW 2016  
or e-mail to [gai.smith9@telstra.com](mailto:gai.smith9@telstra.com)**

The Australian Association of Ryder-Cheshire Foundations would like to thank its many supporters in all States. Your continued and valued generosity enables the work of our Founders to continue, touching the lives of many in the *"relief of suffering"*.

**We thank you all most sincerely.**

The Association gratefully acknowledges David Coath, of Prompt Distribution Pty Ltd, West Heidelberg, Victoria, who most generously arranges and pays for the distribution of this Newsletter.

## RYDER-CHESHIRE WEBSITES

[www.ryder-cheshire.org](http://www.ryder-cheshire.org) and [www.raphaelicare.org](http://www.raphaelicare.org)

## NEWS FROM RAPHAEL

### New Liaison Officer

**Nita Roy** has recently taken over from Meera Handa as Raphael's Liaison Officer. Meera is now working at Ava Vihar assisting Priyo Lall. We welcome Nita and extend thanks to Meera for her valued assistance with Sponsorships.

*The following are extracts from Raphael's Newsletter of December 2004*

### SHIV SADAN

There has been one new admission into Shiv Sadan namely Dhan Bahadur who joins from another lepers' colony in Dehradun. The Sheltered Workshop where the more able residents of Shiv Sadan spend their mornings weaving, continues to produce enough cloth to meet the internal requirements of Raphael.

### LITTLE WHITE HOUSE

Seven new children joined LWH during 2004, 4 boys and 3 girls.

**Subash, Rajesh** and **Uttam** have joined the Nursery class; **Reema** and **Bhappi** are in Kindergarten; **Priya** is in Class 1; **Radha** is in Class 4.

**Rekha Joshi, Rakhi** and **Urmila 1**, who successfully completed Class 12, have gone for further training to the Lal Bhadur Shastri School of Nursing in Yamuna Nagar, Haryana. **Laxmi Rana** who also passed Class 12, has joined the Everest School of Nursing, Yamuna Nagar, Haryana. **Dayaram** who passed Class 10, is training to be a Fitter at the St Francis Vocational Training Centre, Ghaziabad.

**Sunita IV** who plays for the Uttaranchal State Volleyball team, recently participated in an inter school volleyball tournament held in Dehradun.

### AVA VIHAR

Three children with specific learning difficulties come to our resource centre regularly for remedial work. In addition, several workshops have been organised by us in local schools to bring awareness amongst teachers about the problem of Dyslexia.

### VOLUNTEERS

Between the months of July and September, three volunteers from England, **Antonia Brown, Louisa Ritchie** and **Alice Bristow** were with us. From late August to November, **Cassa Heading, Anna Dawson** and **Elena Bridgens** all from Australia, paid us a visit. We have enjoyed having them with us and are grateful for the hard work they put in while they were here. *We hope they will come back and visit us again.*

### DIWALI

This Annual "Festival of Light" was celebrated nationwide on 12th November 2004. This festive season was a busy time for our various vocational workshops especially our candle making workshop. Hundreds of clay lamps and wax candles were made to meet the demand of local schools and individuals who place orders with us every year. The lighting of lamps and candles is an integral part of Diwali and it is lovely to see all the homes lit up on Diwali day.



Most of the children from LWH and Ava Vihar Residential went home for Diwali but for those who remained and for the residents of Shiv Sadan, there was an evening of food, lights, fireworks and general merriment as everyone celebrated this festival that commemorates the fight of Good over Evil.

### A good-bye message from Anna, Elena and Cassa, volunteers from Australia

Our stay here at Raphael (August to November 2004) has been one of many varied experiences and emotions. We have been inspired and touched by the friendliness, hospitality and dedication expressed by all at Raphael. We leave here having made many dear friends with residents, students and staff.

**Anna** spent much of her class time in 'Primary 2', **Elena** in 'Pre-Primary' and Ava Vihar and **Cassa** provided assistance to the 'Academic 1' class. After school hours were spent teaching English to LWH children in Class 4 and 5 and spending time with the men in the Chronic Ward and the residents of Ava Vihar.

Of course we also explored Dehra Dun and its environs, taking trips to Rishikesh, Haridwar, Mussoorie and even tackling a short trek to the Yamunotri Temple in the Garhwal Himalayas.

We have been lucky enough whilst here to experience both Dussehra and Diwali festivals but the highlight was the President of India's visit to Raphael in late September. We felt very privileged to be a part of this grand occasion - and privileged to be considered a part of the Raphael Community in general.

Thank you to everyone at Raphael - you have made us feel very welcome. We have had a wonderful time here and leave with precious memories and friendships.

*Phir Milenge Raphael!*

with love from  
*Cassa, Elena & Anna*

## NEWS FROM TIMOR-LESTE

From Peter Newton - Klibur Domin Project Officer

**Klibur Domin** has been a beehive of activity in recent times with the local staff and volunteers working as a well-oiled team to achieve some wonderful progress.

**The National President, Don Sinclair, and the Victorian President and Klibur Domin Project Officer, Peter Newton,** visited the Home in early February and witnessed these achievements. Their visit had two main objectives.

**FIRSTLY** they attended the dedication service for the **Traditional House built in memory of Mike Chapman**, an Australian PALMS volunteer who had worked at the Home for two years in 2002 and 2003. (see photograph on page 5). Sadly Mike passed away only weeks after returning to Australia. Mike had been the Logistics Adviser for 18 months and then the Home Manager for his last six months at Klibur Domin. Mike had expressed a hope that there might be a space for quiet reflection and prayer established at the heart of Klibur Domin. Many volunteers who had worked with him and recognised his unique qualities and talents, were moved to donate towards the cost of the Traditional House, which is intended to be used as a quiet place for prayer and meditation which fulfils Mike's hopes. "**Mike's House**" (as it has become known) was constructed in late 2004 and dedicated on 3 February 2005. Mike's widow, Nancy Chapman, and one of his daughters, Edith Hurt, travelled to Timor Leste to participate in the service. They also were able to see many of the achievements of Mike's two years at the Home and to visit many of his favourite places around Dili, Tibar and the surrounding district.

The service was attended by many local people and expatriates. The Minister for Health, Dr Rui Maria de Araujo, gave an impressive address, encouraging the local people to use Mike's selfless devotion to the cause of the East Timorese people as an inspirational example in their own lives. Nancy Chapman cut the ribbon to the House and it was blessed by three local priests. The staff and seven overseas volunteers had worked tirelessly to achieve a splendid result which people will remember into the future. The rain held off until the service was over but then poured down while the guests consumed a feast of cakes and refreshments.

**THE SECOND REASON** for the visit of Don Sinclair and Peter Newton was to participate in a Klibur Domin Board of Management meeting to discuss ways of spending funds recently left to the Ryder-Cheshire Foundation for Klibur Domin in a bequest. Dr Rui, who is the Board Chairman, led a very productive meeting where it was agreed that the Home Manager should prepare and cost proposals for a Disability Outreach Program and a Tuberculosis Mobile Team as well as some possible expansion of the facilities at Klibur Domin in the future.

**The first of these** proposals will involve a small team seeking out people with disabilities in the villages around Tibar and then providing support services to them in their own homes and villages. We are already doing this for one young girl who has Cerebral Palsy, and we have provided two wheelchairs for her so that she can now go to school, something she had not been able to do in the past. One wheelchair is kept at her home and the other at the school and she travels between them in a minibus. Her overall progress has been wonderful to observe as she rises to the challenge of learning with the other children of the village. Also she has become far more mobile and can now stand (with help) with the aid of a walking frame. We will build on the success of this trial and hope to be able to assist dozens of other people in the district.

**The second proposal** involves setting up a Mobile Tuberculosis Team again to source TB patients who are not being treated in the

villages around Tibar. The project will have many similarities with the Mobile TB Team which has operated so successfully in the villages of the Himalayas from Raphael. A dedicated vehicle with trained staff will go to the villages on a monthly cycle to locate and test the patients and to set them up with a recovery program of drugs and an educational program to limit the spread of this terrible disease. Where necessary, severely ill patients will be referred to the Dili Hospital and for rehabilitation at Klibur Domin.

Klibur Domin will also critically examine their current operations to determine if the existing accommodation of 50 beds at the Home can meet the projected need in the years ahead. If not, the Board will examine the building of additional accommodation, however the disability and tuberculosis outreach programs will have priority in the allocation of the bequest funds. The Board members were most conscious of the need to allocate the bequest money only to meet the mission of the Ryder-Cheshire Foundation, "*the relief of suffering*" among the sick, disabled and destitute without regard to race, creed, gender or age." Also the need to retain sufficient funds to provide for the increased operating costs of any new or expanded ventures was uppermost in their minds.

**JOAQUIM SOARES** continues to manage Klibur Domin most competently, having taken over on 1 July 2004 and heads a team of thirteen energetic and efficient local staff.

**THE AUSTRALIAN AND OTHER OVERSEAS VOLUNTEERS** continue to provide a most valuable resource to the Home. At present there are three New Zealanders, one German and three Australians at the Home. Shortly there will be a total of four long term volunteers spending from one to two years at Klibur Domin. The number of volunteers who have served at the Home since September 2000 now totals 105, an amazing contribution by these dedicated and committed humanitarians. **WE THANK EACH AND EVERY ONE OF THEM FOR GIVING THEIR TIME, THEIR TALENTS AND THEIR ENERGIES TO HELP THE PEOPLE OF TIMOR LESTE, WITH ABSOLUTELY NO MONETARY REWARD.**

Two of these volunteers will work in the garden with the aim of making the Home largely self-sufficient in vegetables. The large garden area has been fenced and a chicken run and roosting shed constructed. However, Bird Flu problems in South East Asia have meant that no chickens are being imported at present so this project has had to be put on hold. A large orchard of mangoes, pineapples and other tropical fruits is also being planned.

In January 2004 we lost another long term resident, **Rumana das Dores**. Rumana had been living at Klibur Domin since 1996, when the Indonesian Government first established the facility which was taken over by the Ryder-Cheshire Foundation in September 2000. Rumana had been ill for several days and she died from bronchial pneumonia. Rumana was buried, after appropriate mourning and funeral services, at the rear of Klibur Domin along side the grave of Mauricio who died in October. She will be sadly missed by all who knew her.

**In all the Home is running extremely smoothly. This is a credit to the staff and volunteers who are all working extremely hard and achieving excellent results.** The sponsors and supporters of Klibur Domin in Australia can feel well satisfied that their vital financial contributions are making a huge difference to the lives of so many people in Timor Leste. The cost to run the Home is only AUS\$85,000 per year, and the results achieved make this an extremely cost effective operation.

**Thank you to all our supporters who make this possible.**

## TSUNAMI DISASTER

All our readers would have been appalled by the horrible destruction and loss of life caused by the Boxing Day Tsunami in the Indian Ocean. The only good to come of that terrible disaster was the overwhelming response of the Australian people who gave so generously in the days and weeks following the disaster. Once again, the people of Australia showed just how generous they can be when disaster strikes. Apart from the huge amounts of money donated, many people physically assisted in the affected countries or helped to arrange relief supplies back in Australia.

A number of Ryder-Cheshire Foundation supporters contacted the Foundation to see if we would be organising any disaster relief. Being a totally voluntary organisation in Australia, we felt that we were not in a position to assist with the immediate response needed in January and February. The United Nations and the larger Non Government Organisations (NGOs) such as Red Cross, World Vision and Caritas, with massive resources and permanent paid staff, were in a much better position to assist.

We adopted a similar approach after the terrible events in East Timor in September 1999. In the case of East Timor, the Ryder-Cheshire Foundation established a home (Klibur Domin) twelve months after the disaster and we have committed ourselves to helping the people of East Timor into the future at this Home. Most of the NGOs that provided the immediate response have now withdrawn from East Timor and the United Nations will withdraw the last of its staff in May this year.

No decisions have been made at this stage about whether the RCF will be in a position to assist the victims of the Tsunami. The National Executive will continue to monitor the situation in the future. Meanwhile, some of our supporters have sent donations and requested that they be used in Tsunami relief work. These donations have been accepted and receipted and the most likely outcome will be that they will be on-forwarded to an NGO which (like the RCF) provides a very high proportion of donated funds to those in need. We will choose an NGO which is undertaking work in a Tsunami affected country and which accords with the mission statement of the RCF i.e. *"the relief of suffering among the sick, the disabled and the destitute without regard to race, creed, age or gender"*. Any further donations received from our supporters for Tsunami relief will be treated in the same way.

One likely side effect of the generous response to the Tsunami by Australians is that it could be far harder for charities to raise funds in the latter part of this year. Many will consider that they have already "done their bit" for 2005. Our donations were already down in 2004, partly because of the lessening media focus on East Timor, and hopefully we will not see a further reduction in 2005. We can only rely on the generosity of our supporters to allow us to meet our commitments.

## THE TSUNAMI DISASTER "LEONARD CHESHIRE" NEWS from the United Kingdom

**Support from Leonard Cheshire is being distributed to disabled people in Sri Lanka and India affected by the tsunami.**

Charles Morland, Chairman of Leonard Cheshire, has handed over fishing boats to disabled people and their families in Chennai. These fishing boats have been funded by generous UK donations.

A team from the Leonard Cheshire Centre for Conflict Recovery has just visited Sri Lanka to conduct an initial assessment of aid needed to begin reconstruction of essential medical services. Key priority areas identified for further work are in the management of wounds, complex fractures, amputations and limb fitting, and trauma counselling.

The latest figures suggest that over 250,000 disabled people and their families in Sri Lanka and India have lost their livelihoods, homes and, for many, their lives in the Tsunami. Prior to the Tsunami, 1 in 10 of people in this region were disabled. These numbers will now have soared and early assessments suggest that the number of amputees have tripled in Sri Lanka.

**In India, the Leonard Cheshire Homes are being used as a base to reach people in outlying villages.** Many of the disabled people in this region are particularly vulnerable and are still not receiving emergency support. They are also anxious and desperate to regain their means of livelihood.

*From Leonard Cheshire website of 22 February 2005*



### VALE Kath Solomon, New South Wales.

*Kath Solomon, a long-time and most gracious member of the NSW Foundation, sadly died a few months ago.*

Kath was born in New Zealand and became a trained teacher. Later in life she moved to Sydney and married a solicitor, Mick Solomon. She was a very private person and after her husband's death she lived alone in a Unit in Wollstonecraft. Through her membership of Altrusa she became acquainted with Joyce Ratcliffe and Muriel Read who were both involved with our NSW Ryder-Cheshire Foundation. Kath subsequently joined the Foundation, sponsored a child at Raphael and helped on street stalls. She also attended many of our functions.

Over the past few years she surprised us by making a number of large anonymous donations. Her gifts always seemed to come at opportune times and our gratitude and respect for her is immeasurable. **Up to this point we have not been able to acknowledge Kath's extraordinary generosity but now it gives us great pleasure to make it public. In addition, we can now announce that she has made a bequest of \$250,000 to Klibur Domin in Timor-Leste and a bequest of the same amount to Raphael in India.**

**We feel quite overwhelmed by Kath's generosity which ensures that the work of our Homes will continue long into the future. We are pleased to be able to share this wonderful news with all our members.**

**Thank you, Kath, we shall never forget you.**

### AUSTRALIAN CAPITAL TERRITORY

*from Shirley Williams, President.*

In appreciation to our sponsors, donors, and committee members, a delightful afternoon tea was held November 27 2004, at The Deck, Regatta Point, Lake Burley Griffin. Fourteen attended and all agreed it was a beautiful location overlooking the lake. In this tranquil setting.

Shirley Williams expressed her most grateful thanks to our anonymous donor who hosted the event and all those for their time, effort, or financially, who have supported us over the years.

We are pleased with the results of our Christmas card sales as we sold approximately 4,000 cards. We realize the keen competition among all charities for the stretched charity dollar and appreciate those who bought our cards.

Our major fundraising activity for the year is a work in progress. Notification of the event will be sent as soon as we complete the details. Media focus which has been placed on the earthquake/tsunami relief efforts in affected areas, will make our efforts, as well as all other charities, intensify to make our fundraiser successful this year.

March is that time of year that we ask our supporters, members and donors to renew their memberships. ***Please send your renewals to***

**Beth Stone, 33 Glossop Crescent,  
Campbell ACT 2612**

If you have any questions concerning your sponsorship or membership fee, please contact Beth at this address or phone her on **02 6247 7843**  
*Donations over \$2 are tax deductible.*

**We would love to hear from any of our supporters who would like to serve on our committee or to assist the committee with fundraising activities.**

Shirley Williams has updated a Ryder-Cheshire flyer that notes descriptions of the foundation, our homes in Australia, Dehra Dun and Klibur Domin. This, along with the websites for those who wish further information, brings a fresh look to the notice.

*Anyone interested in receiving a copy, please contact*

Shirley at [soulhealer\\_sw@yahoo.com.au](mailto:soulhealer_sw@yahoo.com.au)  
or 5 Ferrier Place Kambah ACT 2902.

**May 2005 be good to you all.**

### SOUTH AUSTRALIA

*From Christine Lopez*

The Foundation resumed activities early this year on January 16th due to a new time and place for our annual BBQ. We thank Rod Lang for his innovative idea of having the annual BBQ at the Charles Sturt house at Grange. Rod arranged for us to use the grounds and also to visit the house during the BBQ. We were very delighted to have an offer from the Henley Beach Lions Club to do the BBQ and supply all of the food as well. Due to their overwhelmingly generosity we were able to thoroughly enjoy a beautiful afternoon, with the trading table and raffle having huge support from those attending. Thank you to all and we hope we will be able to continue with Rod's help—a great place to have our BBQ.

The Charity Card Shop was once again well supported and Judith did her usual marvellous stint at organising the cards and the committee in the shop. We hope the Card Shop will continue to be available to all the charities again this year.

This year we have said goodbye to our very valued and busy Alison Rowney, who with her husband Barry is moving to Queensland. Alison has currently been our Sponsorship Secretary and her evenings for the East Timor dinner have really made their mark. Alison and her many helpers from the Oswald Raphael Group have turned on fantastic movies and dinners and raised thousands of dollars over the past few years. Their most recent November dinner once again was hugely successful. We thank Alison for her innovative and tireless dedication to fundraising and sponsorships.

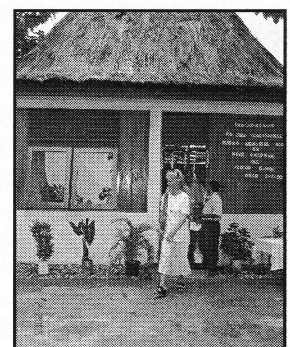
Barbara Phillips is another committee member who organised and ran a wonderful Quiz Afternoon in October with an excellent turnout and from all accounts an afternoon to be repeated. Barbara's expertise with the many and varied items she hand makes for the trading tables is gaining her a reputation that gains us many "buyers" at our functions.

Functions planned for this year will be a Film Afternoon on April 17th with Film/dinner, Quiz Afternoon and BBQ—dates are yet to be decided.

Margaret Blaber (our Secretary) is currently away on a well deserved holiday in India, visiting places of her youth.

#### **"Mike's House"**

Nancy Chapman, at the opening of the **Traditional House** at Timor-Leste, built in memory of Mike Chapman.  
*(see report on page 3)*



## NEWS FROM THE STATES

### NEW SOUTH WALES

*From Jayne Robinson, President*

Our New South Wales committee members had a very busy lead up to Christmas selling cards on about half a dozen street stalls. Once again we have had a wonderful response to the great selection of cards and our fundraising efforts have been rewarded. Thanks to all those faithful members who supported us.

Early February started the New Year off with a committee meeting where the future fund raising for the next year was discussed. Already, a sub committee, led by our function co-ordinator, Judy Purdon, has plans for a Dinner well under way. The dinner is to be held on 30<sup>th</sup> April at Riverview College. Dr Phil Truskett will be the guest speaker and, as he and his wife, Moira, have recently been to Timor-Leste where Phil was a volunteer at the Hospital in Dili, it should be a very interesting and up to date talk. There will also be some entertainment for the evening. The tickets are \$80.00 each and if anyone is interested in attending, please phone **Judy Purdon on 0417 462 696**. Judy and her team are also selling raffle tickets 5 for \$4.00. The first prize is a \$3,000.00 travel voucher, the second prize is a night at the Observatory Hotel Sydney and the third prize is dinner for two at the Bennelong Restaurant Sydney. If anyone would like to purchase tickets please contact Judy on the mobile telephone number provided.

Our Secretary, Margaret Dobbin, was fortunate to be visiting England last September and I thought you might enjoy a few words about her trip.

### “ My Ryder-Cheshire UK experience ”.

While visiting the UK in September 2004, I was interested to have some light thrown on the structure of the Ryder Cheshire Foundation in the country where it all began. It appears that there are **three separate entities** involved in the UK structure and each one, with its focus on the relief of suffering, serves a different sector of the worldwide community.

- **The Ryder Cheshire Foundation** serves as the Trustee for money invested from the sale of a stately home, “Staunton Harold Hall”.
- **Ryder Cheshire Volunteers** involves itself with leisure and learning activities, where people with disabilities are linked to a volunteer with a similar interest eg crochet, stamp collecting, music, craft etc
- **Target Tuberculosis** has taken on the tuberculosis work initiated by Ryder-Cheshire Foundation in North and South India and has added projects in Zambia, Malawi and Bangladesh. It hopes to expand further in the Indian subcontinent.

(The work with disabled people in Tanzania and Nepal has been handed over to national organisations).

The Ryder-Cheshire Foundation makes grants to each of the other two charities (RC Volunteers and Target TB) for development purposes.

**Ryder-Cheshire Volunteers** employs a full time fundraiser who has been successful in attracting money from interested foundations and grant making bodies such as the Lottery.

No, I was not on a fact finding mission, but enjoying a pub lunch as the guest of Patsy Wright-Warren at her “local” in Coleshill near Amersham in Buckinghamshire! It was a gloriously hot English summer Saturday, the pub was crowded inside and out with people having lunch, the publican was jolly and Patsy was great company. She has had a long association with RCF and only a matter of months after my visit with her she announced that she was retiring from her position as Chairman of the Trustees. She tells me that she is finding out that the more you retire the busier you seem to be.

In our house we have a book called “Retire Bizzi” but after eight years of retirement we haven’t yet found time to read it.

### *Retirement must be the same the world over!*

#### **BALLARAT SUPPORT GROUP**

*from Dianne McGrath*

**President** - Bernard Bradbury

**Vice President** -Dianne McGrath

**Secretary** -Janice Cook

**Treasurer/Sponsorships**- Dorothy Carpenter

**Publicity/Events**-

Hazel Luke and Carmel Morgan-Wall

**Cards**- Olive Lamont

**Newsletter**-Dianne McGrath

As the new year begins we welcome our new Committee and look forward to a year of support, events and fund-raising.

We finished off 2004 with a Christmas party. All there were attired in the Christmas spirit. It was a fun way to celebrate our achievements and connections as well as thanking the past Committee for all their guidance and hard work.

We are most appreciative of Olive's generosity and hospitality in sharing her home for the occasion and also for our monthly meetings. The sale of Christmas cards was very good, along with the Christmas raffle. This year we will continue to be as creative as possible as we think of ways to fund raise amidst the times of "the competitive charity dollar." This is quite a challenge for us in Ballarat!

We spent a wonderful afternoon at the **Ivanhoe Home in Melbourne**. We were so impressed with the caring support that is given to the people who use the services of the home. The staff explained the program, features and availability and also conducted a tour of the premises. We were able to present a collection of books from the late Cath Mc Lenehan's Library for use at the Home. We are now investigating ways of promoting the Home in the Greater Ballarat area.

Dianne McGrath

14/26 Fulton Street.

East St. Kilda, Melbourne Victoria 3183

Telephone 03-9510-3774

E-Mail c/o

twarr@ozemail.com.au or terry.warr@cartagen.com.au

## NEWS FROM THE STATES

### WESTERN AUSTRALIA

*From Evelyn Petters, Honorary Secretary*

**AFTER 35 YEARS OF OPERATION, THE RYDER-CHESHIRE FOUNDATION IN WEST AUSTRALIA IS CURRENTLY IN CRISIS BECAUSE OF A LACK OF MEMBERS TO FILL VACANCIES ON THE WA COUNCIL.** We **URGENTLY** need help from anyone who can spare some time to help on this Committee or on the Committee of Barbara Seabrook House (Ryder-Cheshire Home).

**OUR ANNUAL GENERAL MEETING WILL BE HELD ON SUNDAY 3RD APRIL 2005, AND WE NEED TO FILL A NUMBER OF VACANCIES ON COUNCIL. WE WOULD GLADLY WELCOME ANYONE WHO IS WILLING TO COME FORWARD AND HELP TO KEEP THE FOUNDATION ACTIVE IN WESTERN AUSTRALIA.**

For most positions, no special qualifications are necessary - just an interest in helping those less fortunate than ourselves. The time involved is, for most, a 2-hour meeting every other month and helping with the occasional function.

**CANCELLATION OF JAZZ BREAKFAST.** Due to unforeseen circumstances we have cancelled the Jazz Breakfast which was due to be held at the Royal Perth Golf Club on 13th March. We hope to hold this popular event at a later date.

**CHRISTMAS CARDS** Grateful thanks to our small band of card sellers for the success of our Christmas Cards season. While we have lost many of our traditional outlets, we thank our members who purchased by mail. We are truly grateful for their support. Overall we sold 8,200 cards—a very good result.

Our Card Sales in the Charities Card Shop went well and one of our designs "Manger Scene" was the fourth highest seller of the 140 or so designs on sale. 1698 cards of this design were sold in the shop.

**ALL OCCASIONS CARDS** We have some new stock and several new designs. Please contact Clem Astruc on 9301 0714 if you can assist in our fund raising by selling cards, or would like to make a purchase.

**FUNCTIONS** At this stage and until we can recruit some volunteers to form a Functions Committee, no functions have been arranged. **We urgently need assistance to enable us to continue with fund-raising to meet our Overseas Aid commitments for India and East Timor.**

If you can assist in any way, please contact Evelyn Petters (Hon Sec) on 9349 5043 who would be delighted to hear from you.

**RYDER-CHESHIRE FOUNDATION (WA) INC  
NOTICE OF ANNUAL GENERAL MEETING**  
to be held  
**IN THE LECTURE THEATRE  
LIONS EYE INSTITUTE**  
Verdun Street Nedlands  
(enter through Foyer of Lions Eye Institute)  
**ON SUNDAY 3RD APRIL 2005  
commencing at 2.30 pm.**

**Notices and details of this meeting are  
being mailed to all WA members and supporters.**

### BARBARA SEABROOK HOUSE

The past few months have been a very worrying time for the WA Foundation in that we were unable to recruit a new resident House Carer at Barbara Seabrook House, despite a number of advertisements in the press and approaches to various organisations.

We are most grateful for the concern expressed by our colleagues in other States and for the help given, in particular by the Victorian Foundation and Sister Mary Myers. Mary came over to Perth to run the Home for nearly two months which enabled us to keep the Home operating. On the day that Mary left we were contacted by someone recommending a possible replacement, and as a consequence Eleanor (and husband Alan) Gould has taken over and the House is now running smoothly. Eleanor comes to us with good experience in running a residential facility in the country and has happily settled in.

We hope that, given we can keep the Foundation operating, the House will continue providing this help to the Community which is so well received by our guests who stay at the House.

### WA VOLUNTEER FOR EAST TIMOR

The WA Foundation is pleased to welcome Maria Lonie as a Volunteer. Maria, who lives with her family in Rockingham, south of Perth, has recently taken off for three months as a volunteer at Klibur Domin in East Timor. As a registered nurse and mother of three, Maria said she feels the need to assist where she can, and wanted to help the people of one of our closest neighbours. Maria said she had chosen to volunteer for Ryder-Cheshire as an organisation because she was impressed with the organised and professional approach with recruiting volunteers and also she felt secure with Ryder-Cheshire.

The WA Foundation gratefully acknowledges the help given to Maria by **SKYWEST AIRLINES**, who have helped Maria's travel to East Timor by providing free travel to and from Darwin and **CONOCOPHILLIPS** who provided free travel from Darwin to Dili and return.

**We thank SkyWest and ConocoPhillips for their valued support.**

### SPONSORSHIPS

**HAVE YOU EVER THOUGHT OF  
SPONSORING A RESIDENT OR PATIENT BED  
AT RAPHAEL OR KLIBUR DOMIN?**

This can be arranged for individuals and groups for just  
**\$1 a day (or \$365 a year).**

What better way to gain a personal reward while making a real difference to the life of someone in India or East Timor who is suffering or who otherwise would be living in terrible circumstances.

**Think about it and act today.**

Contact your State Foundation at one of the contact numbers listed on page one of this Newsletter.

Newsletter coordinated by Chris Lopez, SA. (08 8322 1833)  
Edited and produced by Evelyn Petters, WA. (08 9349 5043)  
*Newsletters are issued every four months  
in MARCH, JULY AND NOVEMBER.*  
*State reports and other contributions for the  
JULY 2005 ISSUE should be sent by e-mail to Chris Lopez  
christine@dpspublishing.com.au  
no later than Friday 10th June 2005*

## NEWS FROM THE STATES

### VICTORIA

*From Anthea Swann, Secretary*

We wound up 2004 with a well-earned break-up party and Christmas celebration at Helen McKendrick's home. As always, this was a relaxing and enjoyable way to catch up with our Ivanhoe Homes counterparts, and conclude our work for the year.

There have been a few changes to our committee. **First we extend a warm welcome to Peter McConnell who has recently joined the committee.** He comes with extensive experience in management and the catering industry, and we look forwards to having him on the team.

Next, **a fond farewell and a warm thank you to Geoff and Sandy Mattingley** who have taken themselves off to live in the country. We can guarantee that the area around Bairnsdale will soon be jumping! Sandy's and Geoff's creative ideas and energetic input will be missed, and we wish them well for their future activities.

**Helen McKendrick** has also advised us of her resignation due to recurring health problems. Helen has made a very special contribution over many years. Since the early 1980s, she has been deeply and energetically committed to the Ryder-Cheshire cause. **She has been a very long-term member of the Victorian Committee and the Ivanhoe Homes Committee, having served as President on both, and she has been a long term member of the Australian Association National Executive.** Her humanitarian work was publicly recognised on Australia Day 2001 by the award of Member in the Order of Australia (AM). We know that Helen's support for Ryder-Cheshire will continue, and although her wise presence at meetings will be greatly missed, we will not lose her as a valued elder of the Ryder-Cheshire family. **Helen, our heartfelt appreciation and thanks.**

Following the holiday break we have recommenced meetings and have a busy schedule under way for 2005. We are conscious that with public sympathy and dollars flowing strongly to aid for victims of the tsunami, we will need to work harder than ever this year to raise enough to maintain our commitments to Raphael and Klibur Domin. Both these Homes, but particularly the one in East Timor, are dependent on funds from Australia to sustain their operations. This will be a challenge.

The money is now in from Christmas card sales and we are delighted with the growth in this area. Cards were on sale at ten outlets, by mail order, at all functions, and a special effort on election day in October, resulting in the best year yet. An enormous amount of painstaking work goes into this project, and **we congratulate Helen Newton on a great outcome.**

It is evident that with **the Ryder-Cheshire website now being promoted**, on brochures, in the Newsletter, and on Christmas cards, there have been a number of enquiries via that medium. Hopefully this will grow over time.

**(website - [www.ryder-cheshire.org](http://www.ryder-cheshire.org))**

After a record-breaking week at the Lions Club of **Mount Waverley Op Shop** in December we have already staffed the Shop for two weeks in January and February, and we have another week lined up in late March. As the availability of this fund-raising activity has increased, donations of clean clothing in good condition, and household items (not electrical), are needed. We would also welcome offers of help with staffing. Shifts are of three or four hours, the environment is comfortable, and it is loads of fun. Contact Peter Newton on 9894 3191.

**FOR GENERAL ENQUIRIES IN VICTORIA  
please contact: the President, Peter Newton  
on 03 9894 3191  
or email [peter.newton@ryder-cheshire.org](mailto:peter.newton@ryder-cheshire.org).**

### COMING EVENTS IN 2005 FOR MELBOURNE SUPPORTERS

**Thursday March 24<sup>th</sup>**

#### **FILM DAY**

to see "Ladies in Lavender", followed by Lunch  
\$20 all inclusive  
11.00 am at the Palace Cinema, Balwyn  
Enquiries to Anthea Swann 03 9877 7084  
Booking essential

**Tues March 29<sup>th</sup> to Sat April 2<sup>nd</sup>**

#### **OP SHOP**

55 Wadham Parade, Mount Waverley  
Tues - Fri 9.30 to 4.00, Sat 9.30 to 12.30  
Come and find that hidden treasure!

**Wednesday April 13<sup>th</sup>**

#### **BRIDGE DAY**

11.00 am Toorak Uniting Church Hall,  
603 Toorak Rd, Toorak  
\$25 includes cards and lunch  
Enquiries to Helen Newton 9894 3191  
Booking essential

**Saturday May 21<sup>st</sup>**

#### **VALUATION DAY**

10.00 to 4.00 pm Toorak Uniting Church Hall,  
603 Toorak Road, Toorak  
Bring your valuables along at any time during  
the day and have them valued by a professional  
valuer for just \$5 for each article.  
Refreshments available.  
No bookings needed  
Bring your friends and neighbours